

CHRONOLOGY: FROM MADELEINE SOPHIE'S DEATH TILL NOW.

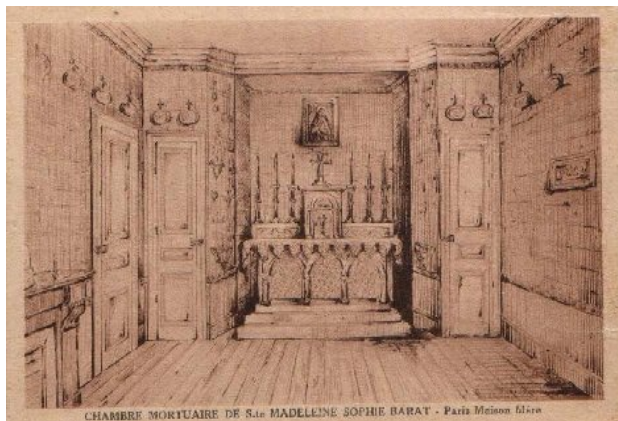
1865 TO 1904 IN FRANCE. 1906 TILL 2006 IN BELGIUM. After 100 years, return to Paris.



1865-25th May: Magdalena Sofía dies in *Hôtel Biron*, Paris.



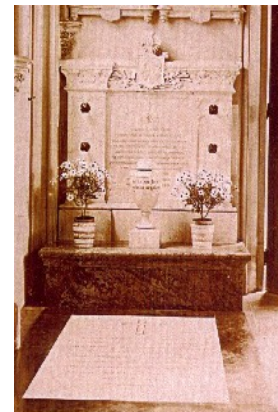
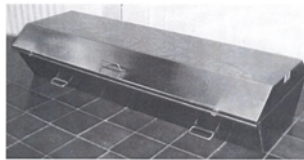
1865-29th May: She is buried in the cemetery at Conflans (France).



1872: Mother Goetz asks for all the letters (14,000) written by Madeleine Sophie Barat, and testimonies about her sanctity. Ecclesiastical tribunals are established in the Mother House and in Rome, before which witnesses made declarations about the life of the Foundress. In 1873, Mother Goetz returns to **Rome** to give her testimony.



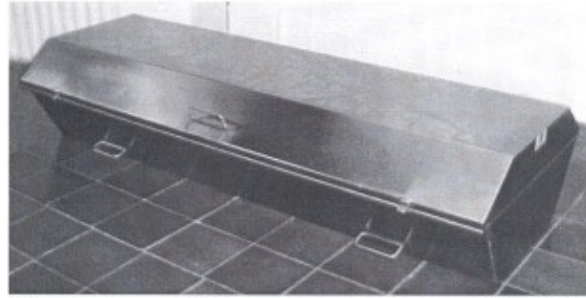
1893 - 2nd October: Madeleine Sophie's body is exhumed in order to have proof and canonical recognition of her remains as being those of a future **French saint**. Her body was found to be incorrupt.



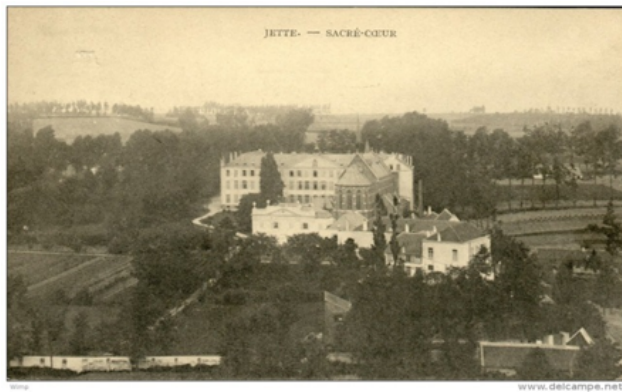
1893 - 26th October: The body is moved to the crypt in the Chapel of Sorrows in Conflans (**France**).



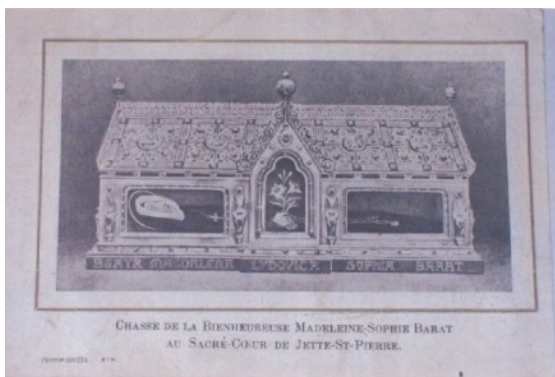
1904 - 30th April: Due to the Expulsions from France, the body is transferred to St Peter's Church, Jette (**Brussels, Belgium**) and interred in the crypt of the great Neogothic Chapel. The coffin was not opened.



St Peter's Church - Jette, **Belgium** (Altar of St Madeleine Sophie Barat)

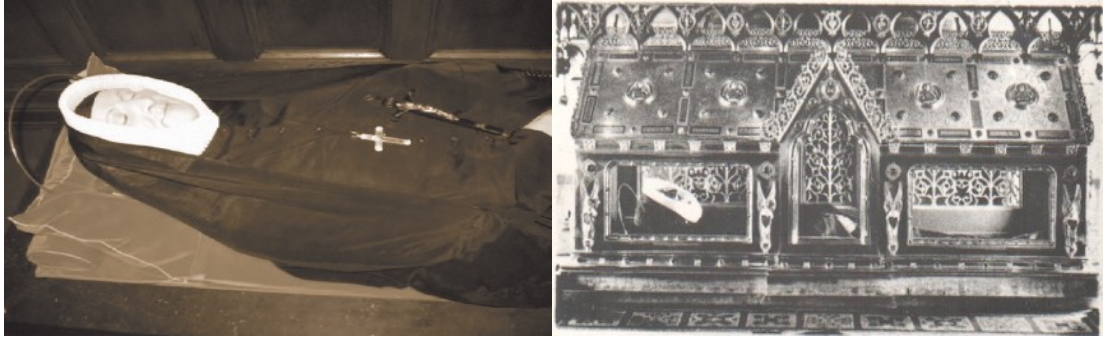


1908 - 28th March. The spruce-oak-and-lead coffin is opened, to examine the remains once more. The body is found to be incorrupt. Jette, **Belgium**



B. MAGDALENA SOPHIA BARAT
Fundadora de las Religiosas del Sagrado Corazón.—Fiesta el 25 de Mayo.

1908 - 24th May. Sophie is placed in the "châsse." She is declared a Saint. **Rome**



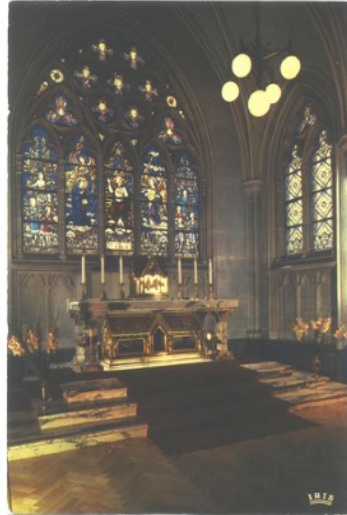
1908 - from 27th July till 13th August: the coffin is opened a number of times. A mask is made of the face and the reliquary destined to contain her body. Jette, **Belgium**



1909 - 30th April. The body of Madeleine Sophie is placed in the “châsse” at the side altar of the great church of St Peter. Jette, **Belgium**



1925 - 25th May: Madeleine Sophie is canonised in Rome.



1934 - 11th September. The “châsse” is transferred to a new chapel dedicated to the saint, adjacent to the Neogothic chapel of Jette, **Belgium**.



1982 - 2nd October: the majority of the sisters left Jette, Belgium. A small group of them remained, in the Château Bonaventure, known as the Little Château which was bought by Saint Madeleine Sophie.



1994 - 17th February. After the demolition of the great chapel of Saint Madeleine Sophie she is once again rendered inaccessible as the “châsse” is transferred to the Little Château, Jette, **Belgium**. The room where the “châsse” is placed becomes a temporary oratory.



1998 - 24th May: the “châsse” is transferred to the chapel of the community in 31 Rue de L’Abondance, **Brussels**, which welcomes pilgrims.



2006 from September onwards: The General Council decide to transfer the “châsse” to the Church of St Francis Xavier in **Paris**, opposite the place where Saint Madeleine Sophie lived and died, Boulevard des Invalides N°33.

Return to Paris after 100 years



2009 - 19th June. The date of the transfer to the Church of St Francis Xavier in Paris was the feast of the Sacred Heart.

Sources: General Archives, Villa Lante, Rome y Province of Belgium-Netherlands. Brussels.

Carmen Victoria de Soloaga rscj
Province of Spain